

REVISIONS		
REV. NO.	DESCRIPTION	DATE

APPROACH SLAB QUANTITIES (PHASE I)				
ITEM	UNIT	APPROACH SLAB NO. 1	APPROACH SLAB NO. 2	TOTAL
1 APPROACH SLAB	S.Y.	70.30	70.30	140.60
SAW-CUT GROOVING	S.Y.	66.70	66.70	133.40
CONCRETE RAIL (TR4)	L.F.	30.00	30.00	60.00
MECHANICAL SPLICE	EA.	31.00	31.00	62.00
WATER REPELLENT (VISUALLY INSPECTED)	S.Y.	14.0	14.0	28.0

BAR LIST APPROACH SLAB NO. 1 (PHASE I)				
MARK	SIZE	NO.	FORM	LENGTH
EPOXY COATED REINFORCING				
AT1	#4	31	STR.	20'-9"
AT2	#4	31	STR.	20'-11"
AL1	#4	22	STR.	29'-10"
AL2	#9	33	STR.	29'-10"
SR1	#5	92	BNT.	4'-1"

BAR LIST APPROACH SLAB NO. 2 (PHASE I)				
MARK	SIZE	NO.	FORM	LENGTH
EPOXY COATED REINFORCING				
AT1	#4	31	STR.	20'-9"
AT2	#4	31	STR.	20'-11"
AL1	#4	22	STR.	29'-10"
AL2	#9	33	STR.	29'-10"
SR1	#5	92	BNT.	4'-1"

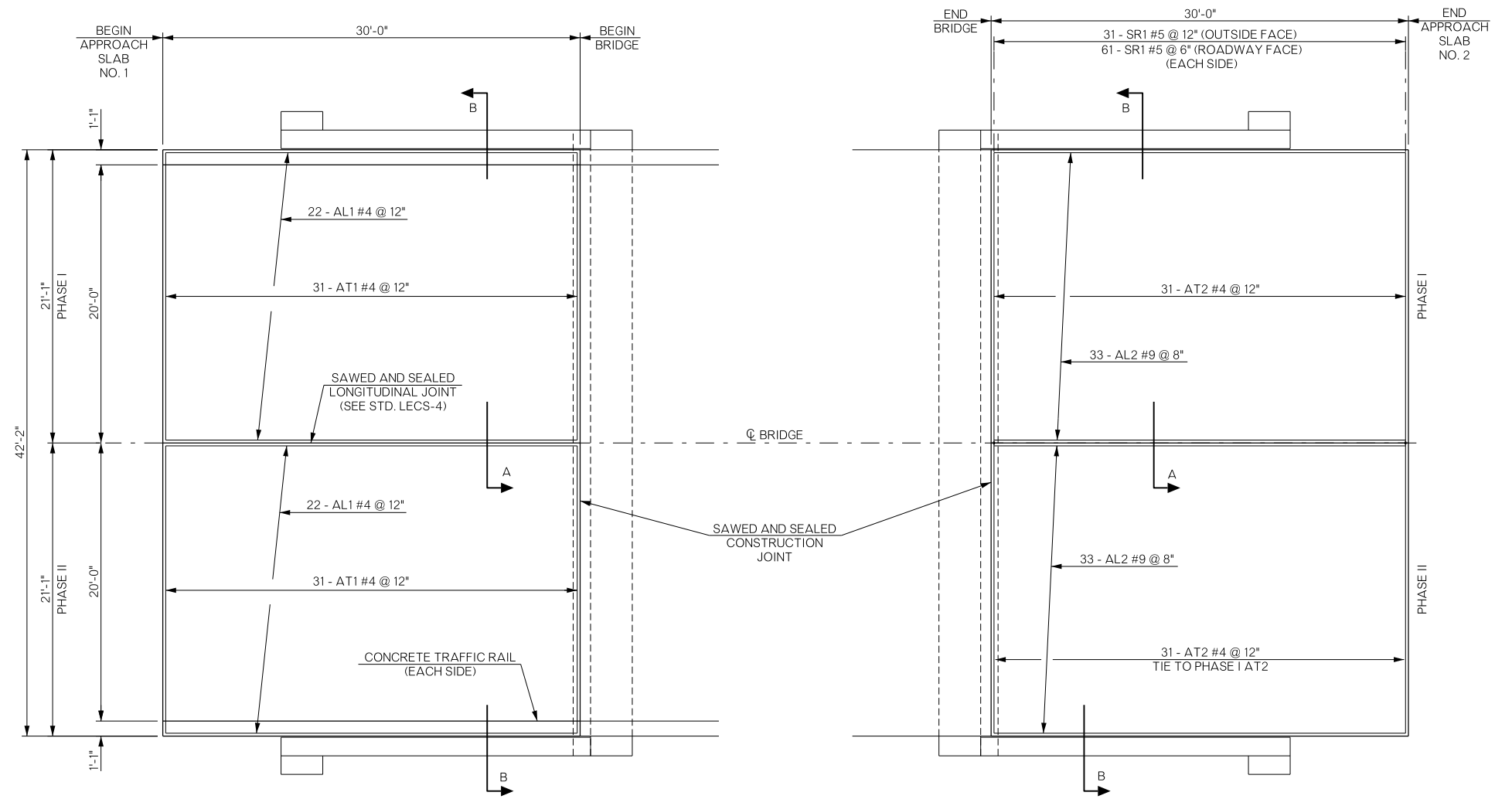
APPROACH SLAB QUANTITIES (PHASE II)				
ITEM	UNIT	APPROACH SLAB NO. 1	APPROACH SLAB NO. 2	TOTAL
1 APPROACH SLAB	S.Y.	70.30	70.30	140.60
SAW-CUT GROOVING	S.Y.	66.70	66.70	133.40
CONCRETE RAIL (TR4)	L.F.	30.00	30.00	60.00
WATER REPELLENT (VISUALLY INSPECTED)	S.Y.	14.0	14.0	28.0

BAR LIST APPROACH SLAB NO. 1 (PHASE II)				
MARK	SIZE	NO.	FORM	LENGTH
EPOXY COATED REINFORCING				
AT1	#4	31	STR.	20'-9"
AT2	#4	31	STR.	20'-11"
AL1	#4	22	STR.	29'-10"
AL2	#9	33	STR.	29'-10"
SR1	#5	92	BNT.	4'-1"

BAR LIST APPROACH SLAB NO. 2 (PHASE II)				
MARK	SIZE	NO.	FORM	LENGTH
EPOXY COATED REINFORCING				
AT1	#4	31	STR.	20'-9"
AT2	#4	31	STR.	20'-11"
AL1	#4	22	STR.	29'-10"
AL2	#9	33	STR.	29'-10"
SR1	#5	92	BNT.	4'-1"

NOTE:
FOR SR1 BAR BEND, SEE
STD. TR4-2.

1 THE DEPARTMENT CONSIDERS THE COST OF CONCRETE, REINFORCING STEEL (INCLUDING SR1 BARS), BACKER ROD, RAPID CURE JOINT SEALANT, POLYSTYRENE AND POLYETHYLENE SHEETING TO BE INCLUDED IN THE CONTRACT UNIT PRICE OF APPROACH SLAB. THERE IS AN ESTIMATED 50.8 C.Y. OF CLASS AA CONCRETE AND AN ESTIMATED 10,080 LB. OF EPOXY COATED REINFORCING STEEL IN EACH APPROACH SLAB.



NOTE:
FOR ADDITIONAL DETAIL
OF APPROACH SLAB AT
ABUTMENT, SEE DETAILS
ON SHEET B019

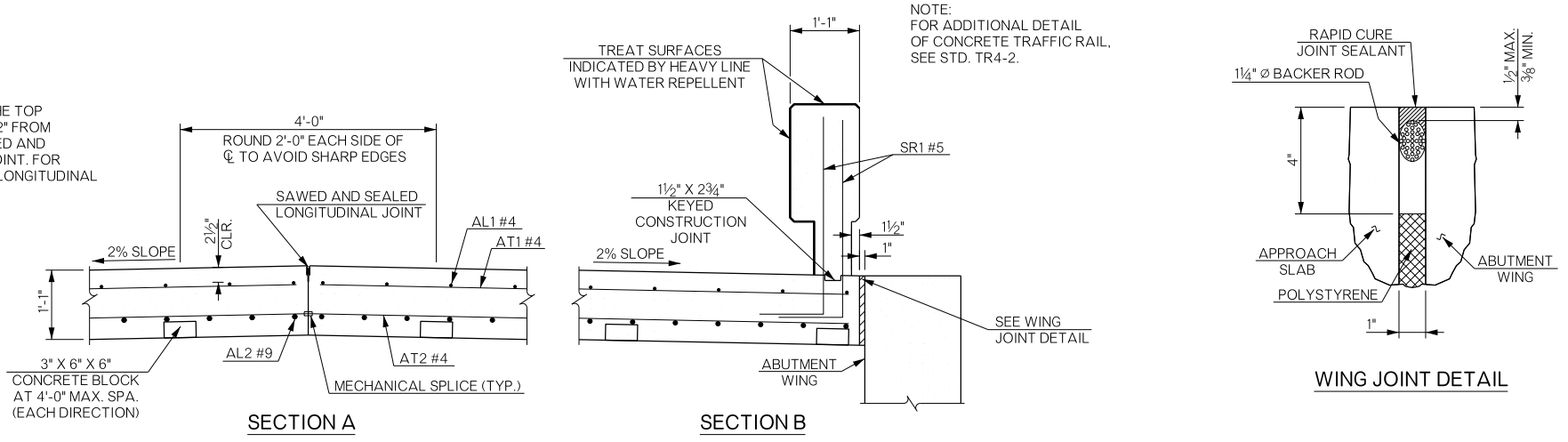
**TOP REINFORCING
MAT DETAIL**

APPROACH SLAB NO. 1

**BOTTOM REINFORCING
MAT DETAIL**

APPROACH SLAB NO. 2

NOTE:
PLACE REINFORCING IN THE TOP
OF THE APPROACH SLAB 2" FROM
EITHER SIDE OF THE SAWED AND
SEALED LONGITUDINAL JOINT. FOR
ADDITIONAL DETAILS OF LONGITUDINAL
JOINT, SEE STD. LECS-4.



SECTION A

SECTION B

WING JOINT DETAIL

BRIDGE "B" U.S.-277 over SNAKE CREEK		COMANCHE COUNTY		Design	MLC	07/16
DETAILS OF APPROACH SLABS				Detail	VNT	07/16
				Check	DAH	04/17
STATE OF OKLAHOMA				DEPARTMENT OF TRANSPORTATION		Squad: HARJO Engr: MOLLA-ESMAIL
JOB/PIECE NO. 27968(04)				SHEET NO. B027		